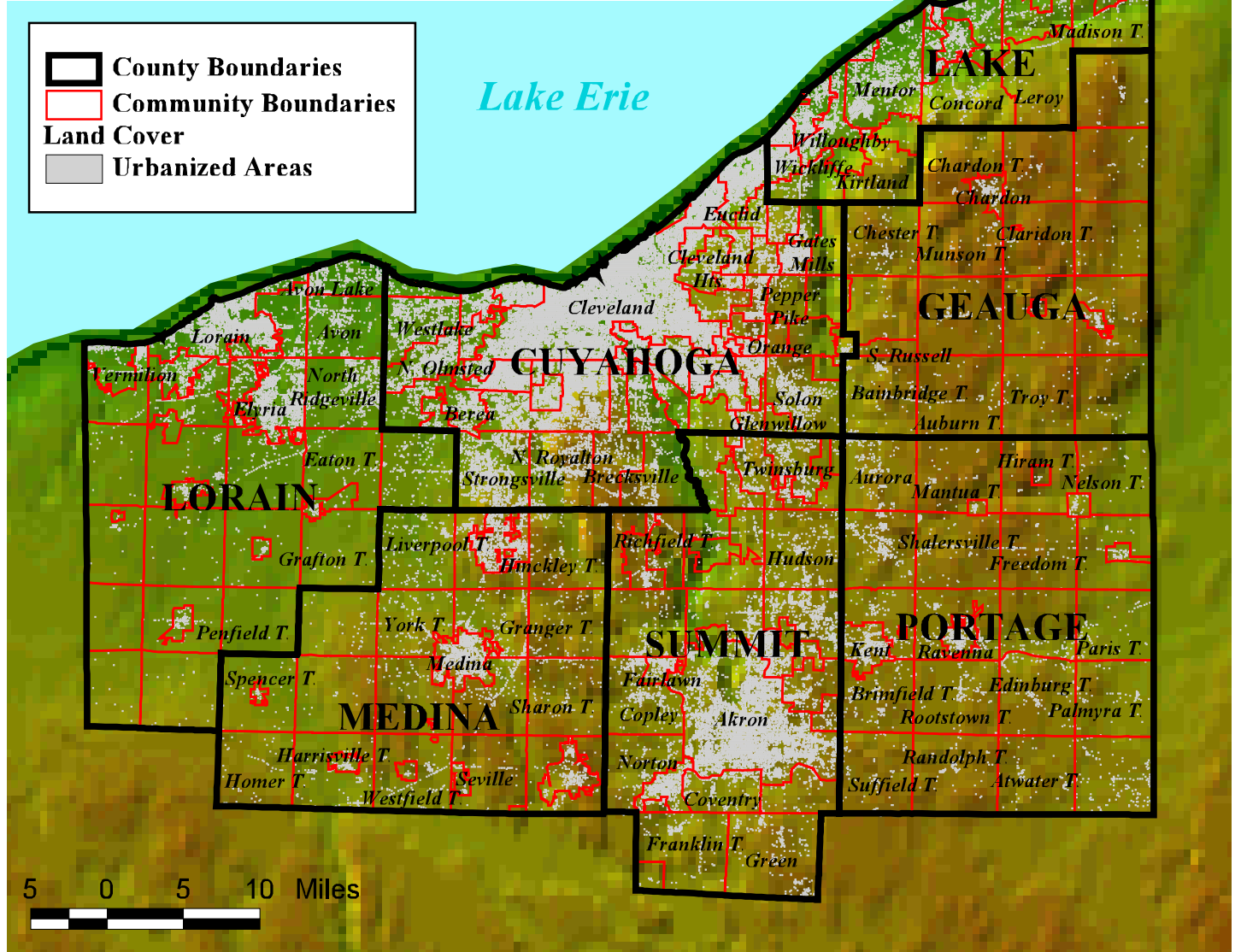


EcoCity Cleveland's Citizens' Bioregional Plan

The seven county bioregional planning area



Northeast Ohio -- 7 counties

When we want to learn more about our home region here in Northeast Ohio, most of us refer to the maps that are readily available to us. More often than not, those are road maps that were designed to help us navigate the region by car. With them, we can easily pick out the city, township and county borders in Northeast Ohio and the highways and state routes that will get us from one place to another.

But if we want to explore the bioregion, we need to look beyond those political boundaries and roads so that we can see the underlying natural features. If we succeed in doing so, we'll be able to see much, much more. We'll see the boundaries between watersheds and the way the Allegheny plateau to the east descends to the lake and till plains to the

west. Forested areas and farmland will reveal themselves, as will the protected green spaces and the urbanized areas where most of our region's residents live. Thinking bioregionally, we'll be able to follow those features where they lead us, whether they're bounded by municipal and county lines or they meander through dozens of cities and townships.

The region shown in the map above sets some boundaries on our explorations in this citizens' bioregional planning process. But the county boundaries and highways indicated above are simply there to help us situate ourselves in terms we're most familiar with. Move on to explore the maps on the following pages and discover more of the treasures of our Northeast Ohio bioregion.

Prepared by:

Northern Ohio Data & Information Service

a member of the Ohio GIS-Network

The Urban Center, Levin College of Urban Affairs

Cleveland State University

December 1998 B.Mc

Sources:

1. Land cover: 1994 Landsat TM

2. Shaded relief: Ray Steiner, Johns Hopkins University, Applied Physics Laboratory, 1994