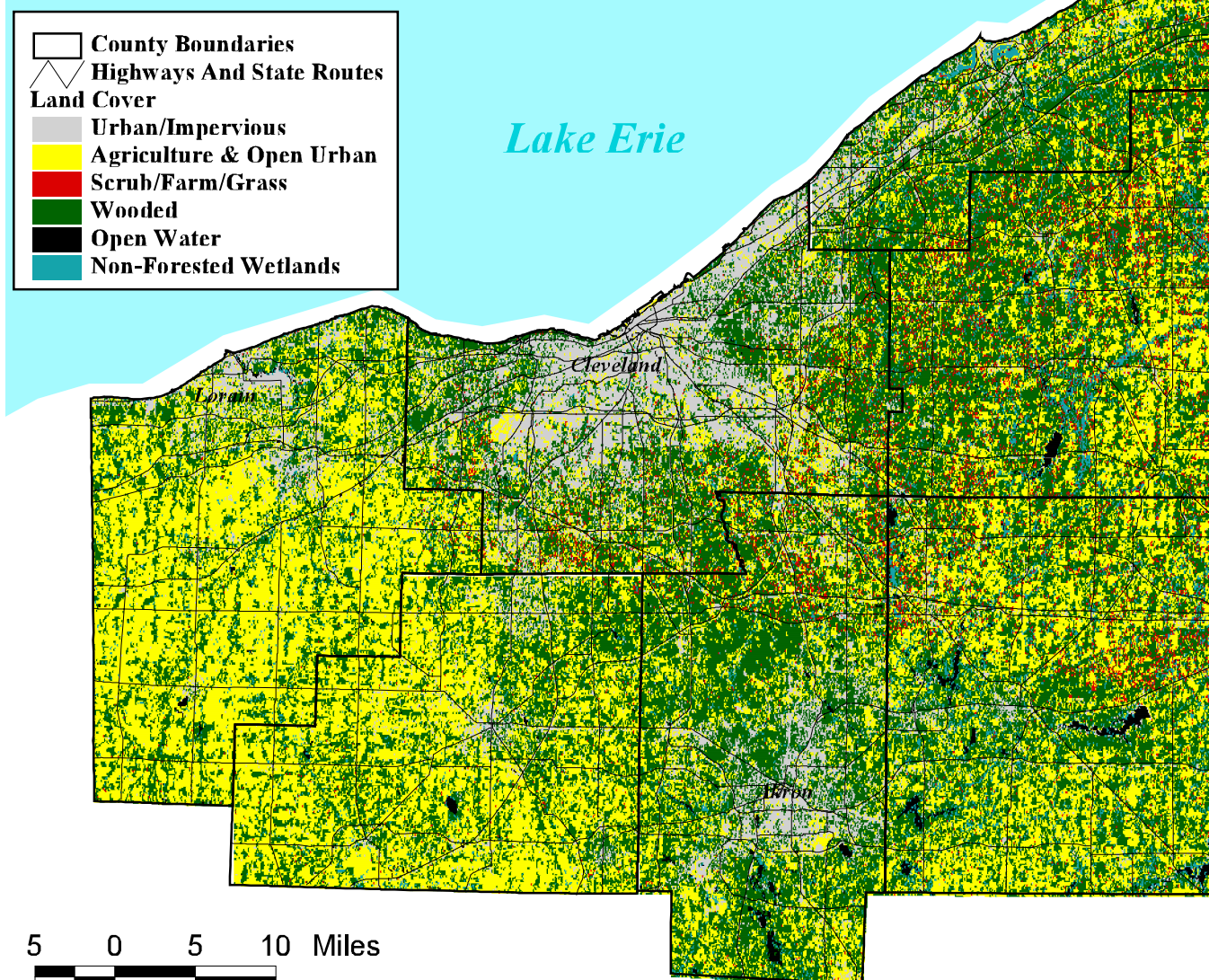


# EcoCity Cleveland's Citizens' Bioregional Plan

## 1994 satellite image of Northeast Ohio land cover



### 1994 Land Cover

If you took a picture of our region from miles high in the sky, what would you see? Provided there were no clouds obscuring your view, you'd be able to make out the heavily urbanized areas where buildings and concrete predominate. Acres of green crops (if you're looking in the right season), freshly plowed fields, and "scrub land" lying fallow would be visible. The forests would be obvious and rivers, lakes and reservoirs would appear in deep blue.

The map you see above shows precisely these things. It is based upon photographs taken by a satellite in 1994 and, all in all, it is a very good snapshot of what could be seen on the ground in Northeast Ohio at that time. The

map was created by the Ohio Department of Natural Resources by classifying the information contained in the photographs into six major categories: urban and other impervious lands; agriculture and open urban lands; "scrub" land, farms and grassy areas; wooded lands; open water; and non-forested wetlands.

Identifying suburban areas is the most difficult thing to do in making a map like this because houses are often spread out so that from as high as a satellite flies they are difficult to pick out. So, in some places on this map where land is classified as forested or "open urban land," in fact, low-density suburbs exist.

### Prepared by:

Northern Ohio Data & Information Service

a member of the Ohio GIS-Network

The Urban Center, Levin College of Urban Affairs

Cleveland State University

December 1998 B.Mc

### Sources:

1. Highways/state routes: Ohio Department Of Transportation (ODOT)
2. Land cover: 1994 Landsat TM